



HTL Dedicated Square Drive

The HTL Dedicated Square Drive Torque Wrench has been designed to offer optimum performance levels for both tightening and loosening nuts and bolts.

The robust and durable design has been manufactured to deliver extreme versatility and ease of operation and can be used in conjunction with standard impact sockets from $\frac{3}{4}$ " to 2 $\frac{1}{2}$ " square drive. A range of direct hex drive adaptors are also available.

The range also features a 360° x 180° uni-swivel which prevents hose kinking and allows it to be used in highly confined areas. Providing you with the utmost accuracy, the HTL Dedicated Square Drive Torque Wrench range is unrivalled due to its lightweight yet resilient design.

Operator Safety

To improve operator safety HTL have also designed an ergonomic, adjustable torque wrench handle which can be easily fitted to HTL Dedicated Square Drive Wrench. This lightweight, durable accessory can prevent injuries such as trapped fingers by eliminating the need to hold the tool itself.

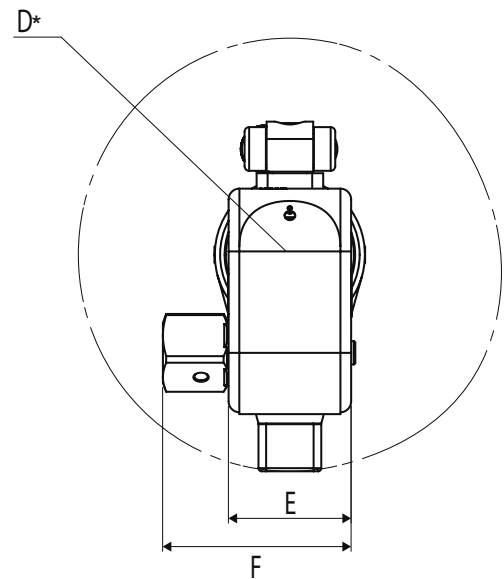
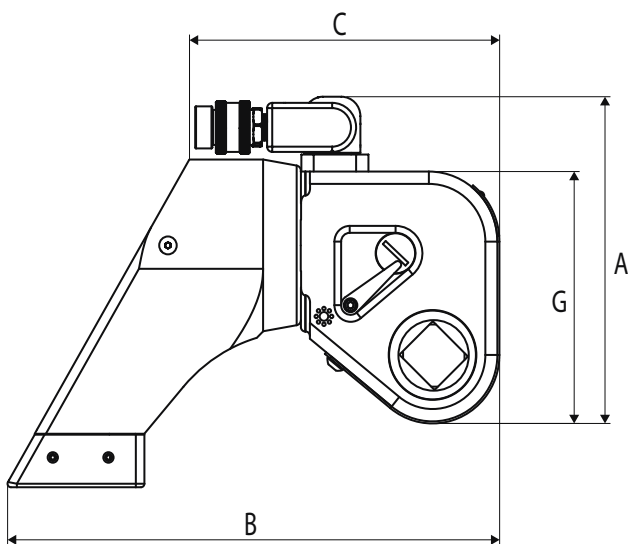
Features and Benefits

- ✓ Models from 200 - 25,890 Ft/Lbs (271 -35,096 Nm)
- ✓ Made in the UK
- ✓ $\frac{3}{4}$ " to 2 $\frac{1}{2}$ " square drive
- ✓ 360° x 180° hydraulic swivel
- ✓ 360° adjustable reaction arm
- ✓ Small nose radius for minimal clearance
- ✓ Lightweight aircraft grade aluminium body
- ✓ Torque accuracy +/- 3%
- ✓ Dual pawl system prevents 'lock on'
- ✓ Double acting



Technical Information

Model		HTL-DS1	HTL-DS3	HTL-DS5	HTL-DS10	HTL-DS25
Square Drive Size		$\frac{3}{4}"$	1"	$1\frac{1}{2}"$	$1\frac{1}{2}"$	$2\frac{1}{2}"$
Min Torque	lb.ft	200	480	835	1755	3960
	Nm	271	651	1132	2379	5368
Max Torque	lb.ft	1340	3230	5590	11520	25890
	Nm	1817	4379	7578	15617	35096
Weight	kg	2	4	8	13	31
A	mm	125	163	185	225	282
B	mm	180	237	288	357	473
C	mm	120	155	185	232	310
D	mm	85	115	139	173	229
E	mm	50	67	80	100	134
F	mm	73	96	126	143	191
G	mm	90	120	145	186	234



*D = Reaction arm radius



INDUSTRY LEADERS IN CONTROLLED BOLTING, FLANGE WORKING AND PORTABLE MACHINE SOLUTIONS



Offshore Tooling & Services Pty Ltd

Telephone: 0408 995 612

Email: sales@offshoretooling.com.au

Visit: offshoretooling.com.au